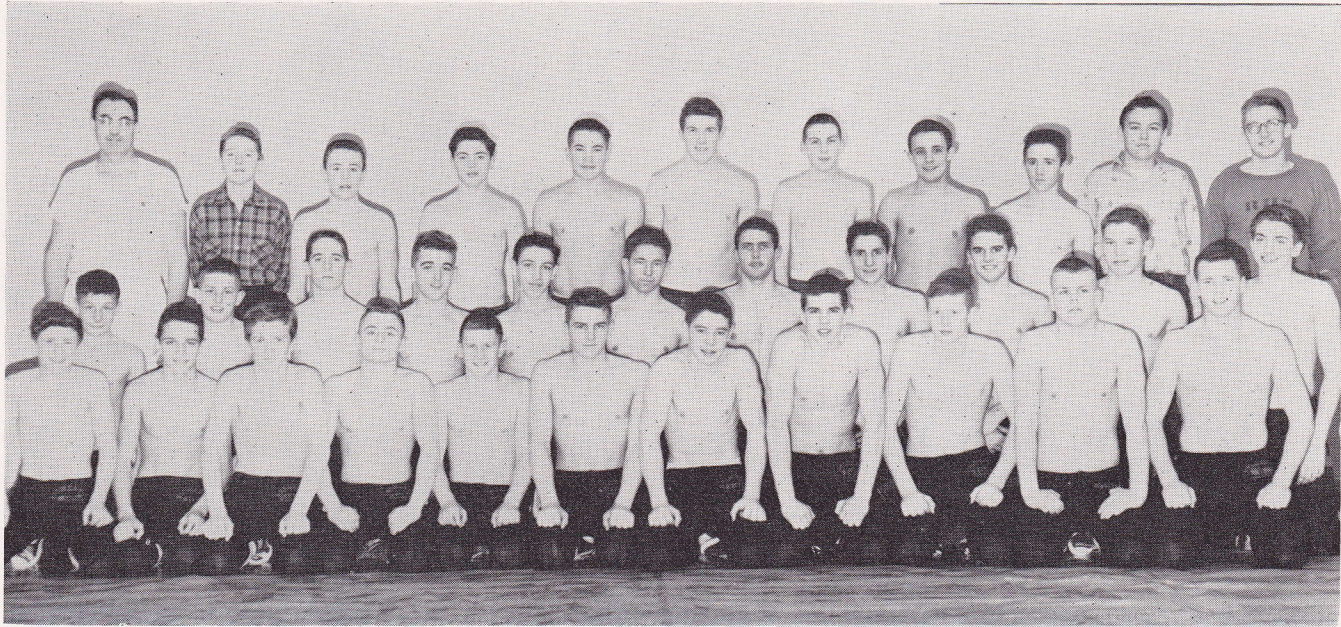


1956

**R**

**ROCHORD**



FIRST ROW, LEFT TO RIGHT: B. Rommell, D. Kauffman, D. Nelson, G. Marti, J. Wickersham, L. Penz, D. Ostrom, H. Schlieff, A. Williams, D. Anderson, T. Jung. SECOND ROW: J. Jennesin, P. Kierland, M. Fosburgh, R. Nelson, R. Gilson, G. Hawley, C. Campbell, N. Doty, B. Hurrle, R. Hawley, R. Hanson. THIRD ROW: Coach Ridenour, Manager A. Ackerman, B. Everett, D. Brecke, P. Wright, T. Beagle, K. Meyers, T. Reese, D. Smith, R. Berndt, Coach Silker.

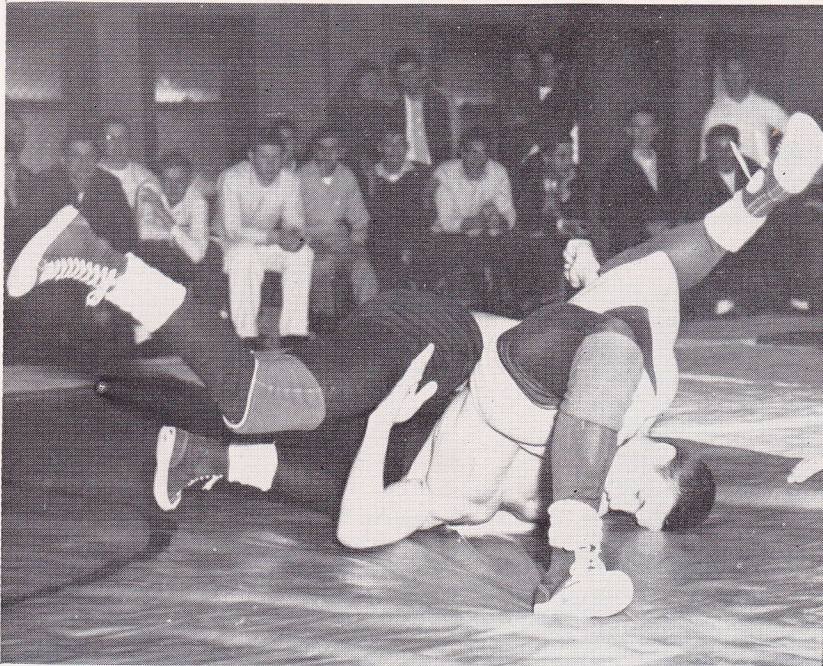
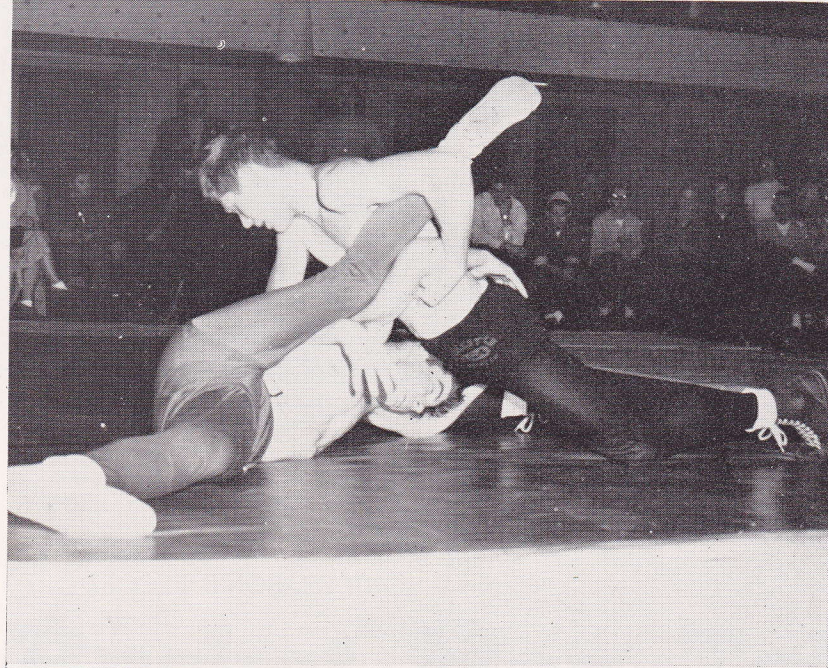
## Young Grapplers Show Promise



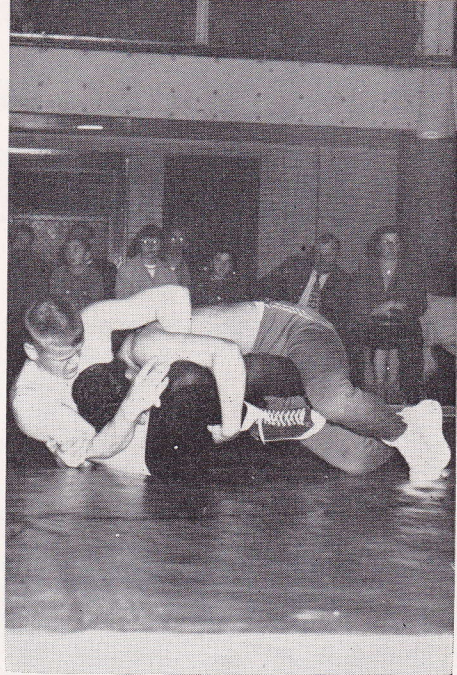
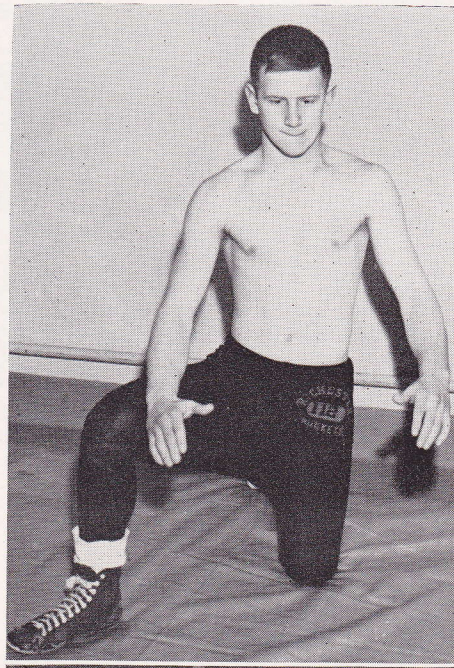
### OUR SEASON'S RECORD

OPPONENT	We	They
Austin .....	29	17
Northfield .....	15	22
Winona .....	24	25
St. Charles Tourney .....	First Place	
Faribault .....	10	30
Washburn .....	29	12
Albert Lea .....	21	19
Owatonna .....	10	33
Mankato .....	15	22
Austin .....	19	16
Winona .....	19	19
Regional .....	Fifth Place	

Dinks Schlieff, who along with teammate Lowell Penz entered the state tournament, is given a bit of wrestling advice by his two coaches.



TOP: August Williams, 154-pounder, applies pressure to the strained leg of his Albert Lea opponent. BOTTOM: Caryl Campbell comes close to pinning his man in 138-pound competition.



TOP: Captain Jim Wickersham, 112-pounder. BOTTOM: "Andy" Anderson, 165-pounder, better get out of this one quick!

# MIGHTY MATMEN